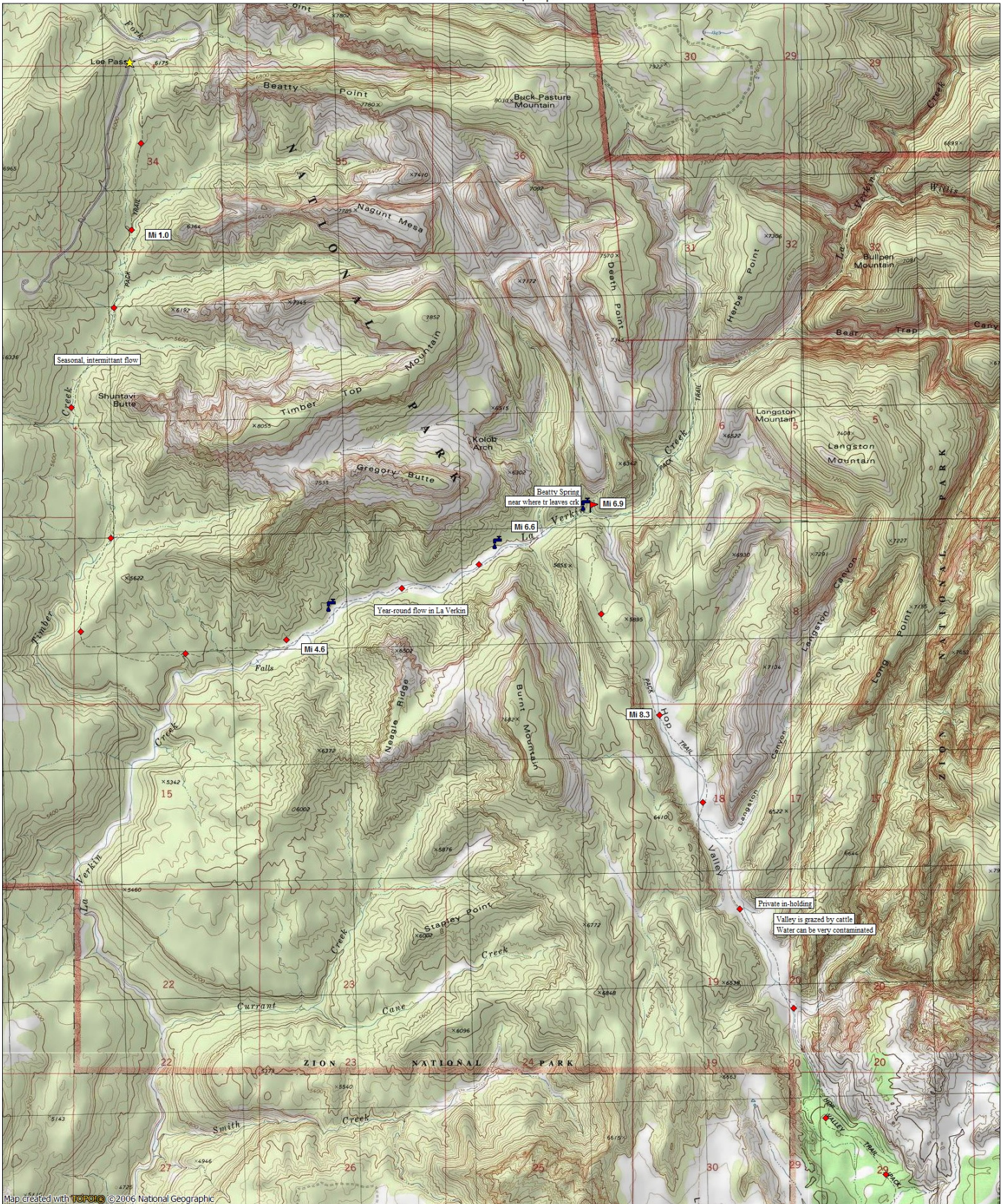
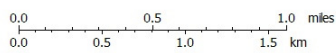


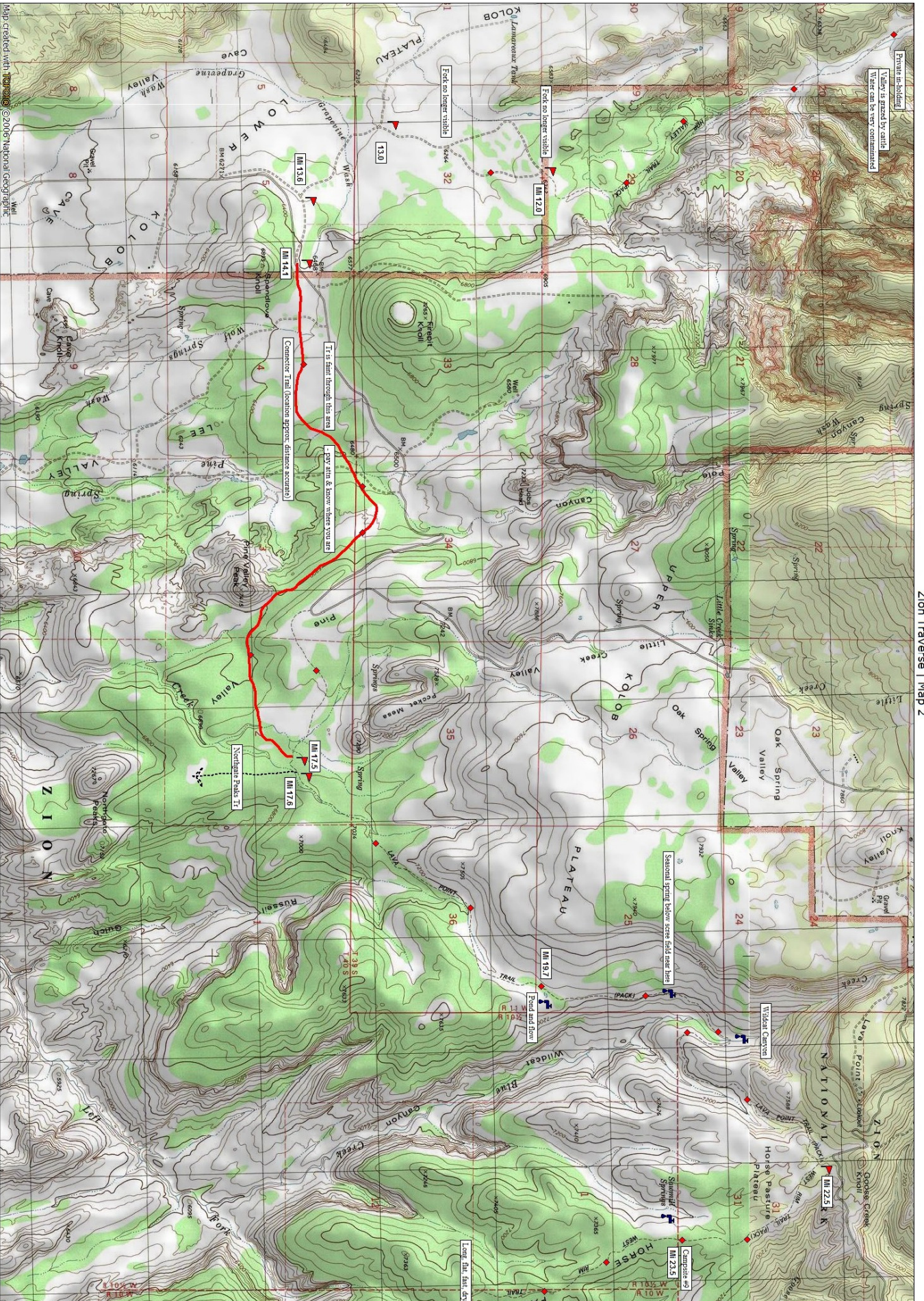
Zion Traverse | Map 1

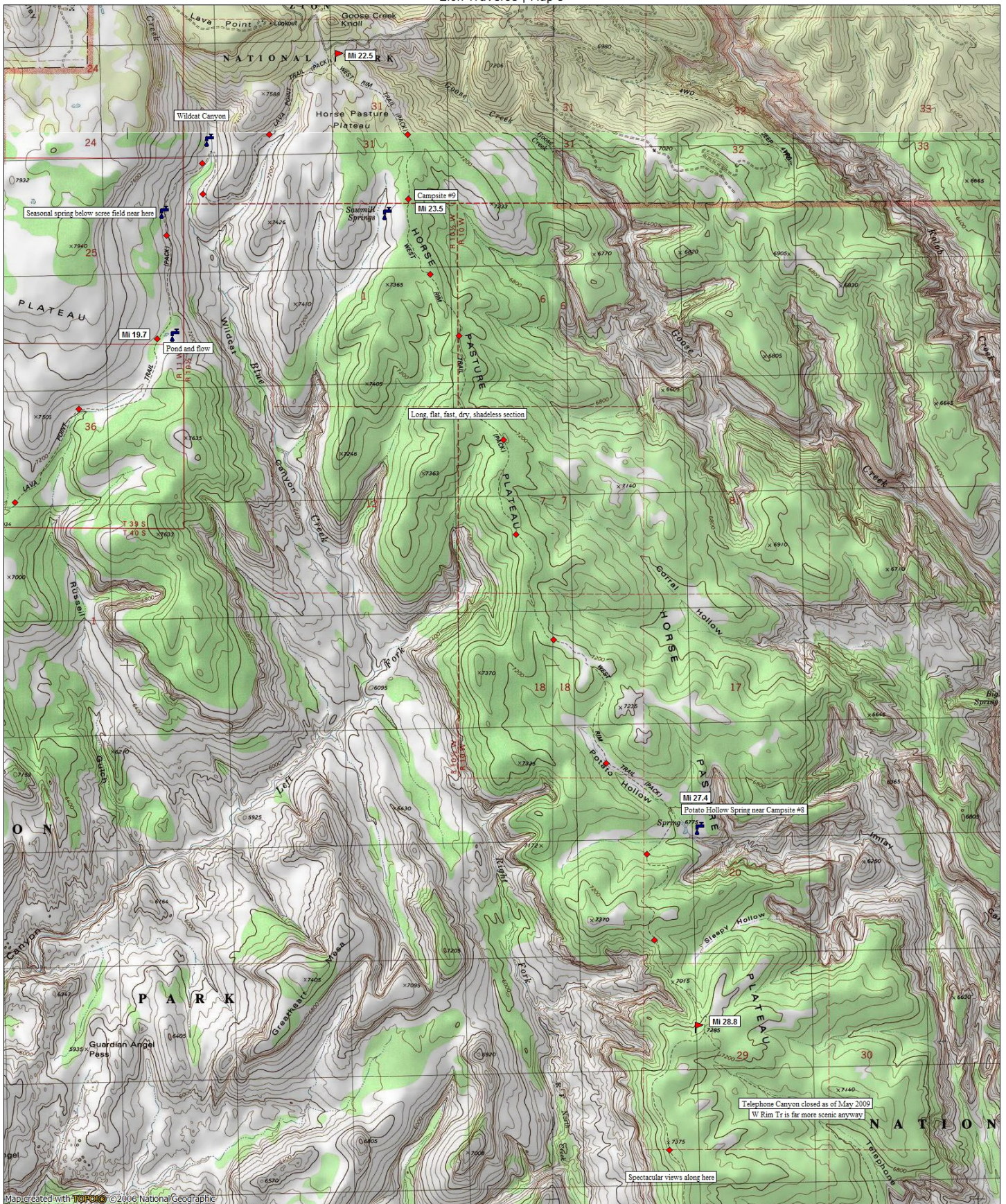


Map created with TopoTools ©2006 National Geographic

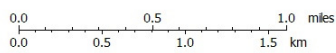


TN 12° MN
05/06/09

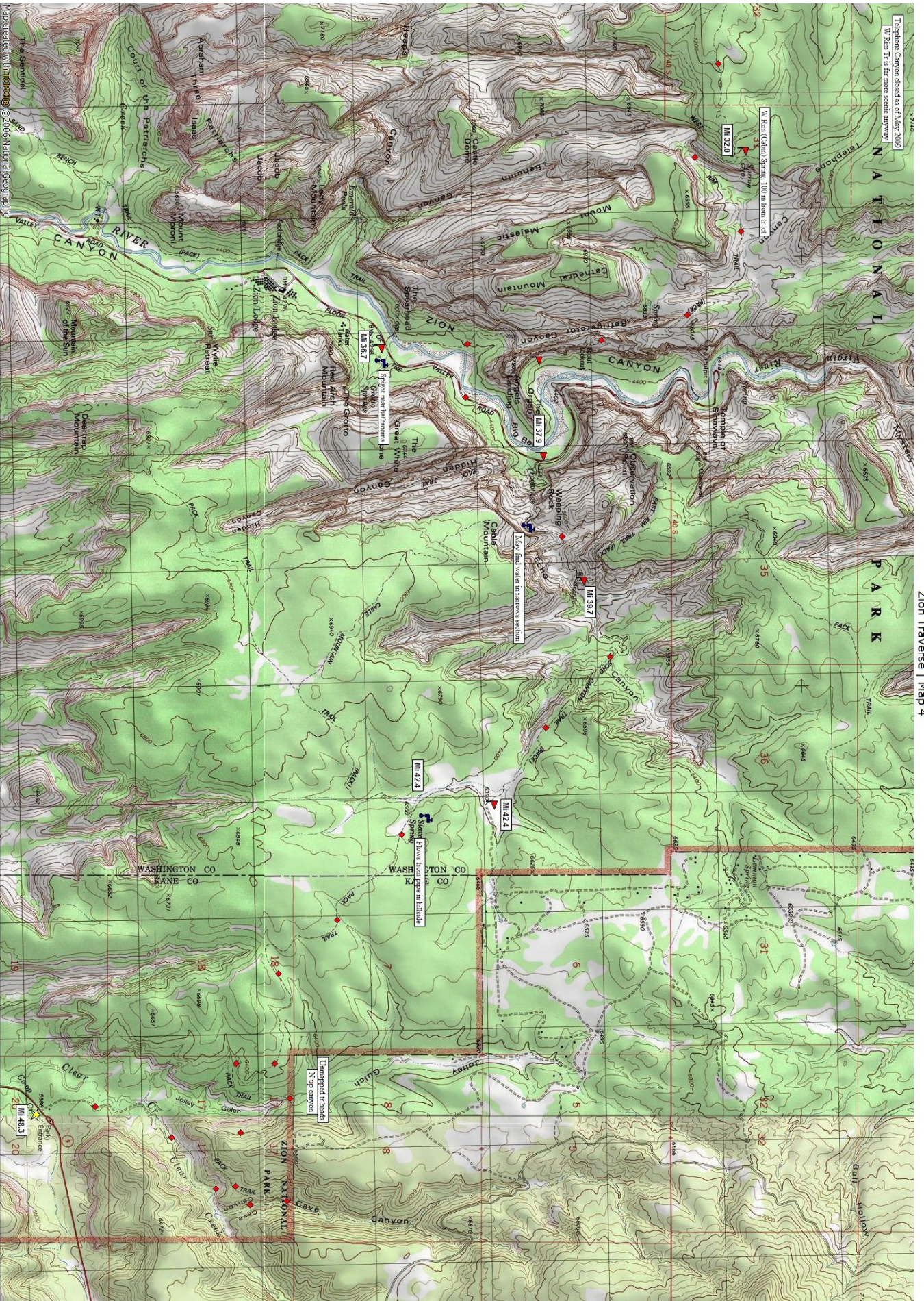




Map created with ©2006 National Geographic



TN MN
12°
05/06/09



Telephone Canyon closed as of July 2009
W. Rim (Cedar) Spring 100 m from trail

MI 32.0

MI 37.9

MI 35.7

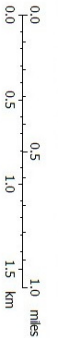
MI 42.4

MI 42.4

MI 43.3



NATIONAL GEOGRAPHIC



05/06/09